

MB immobilizer emulator EML927/451 installation guide

2013.10.08 edition 01

LED indicator after ignition “on”:

LED still off	Incorrect connection, bad power supply of ECU, broken ECU, short CAN line, connected immobilizer box (original immobilizer box must be disconnected)
LED go on and after few seconds goes out	Normal condition in both systems (CR1 and CR2)
LED go on and after few seconds start blinking	System CR1, not programmed or incorrect programmed eeprom of ECU.
LED go on and still light.	System CR2, not programmed or incorrect programmed eeprom of ECU.

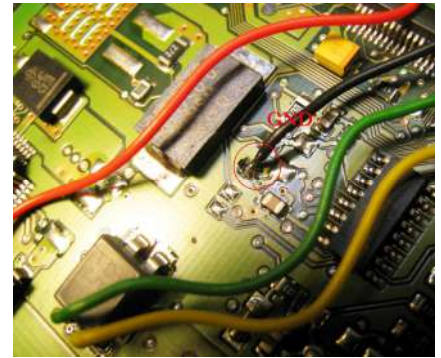
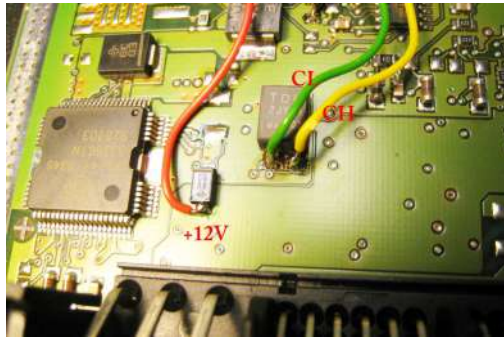
MB Vito ECU 5 plugs, eeprom 24C04, system CR1



	0	1	2	3	4	5	6	7	8	9	A	B	C	D	E	F	0123456789ABCDEF
00000000	00	00	00	00	00	00	00	00	00	00	00	B1	03	01	FF	
00000010	61	FF	FF	71	FF	39	37	31	2E	30	39	39	39	37	31	2E	a...q.971.099971.
00000020	30	39	05	10	3D	D4	B8	CE	FF	FF	FF	FF	FF	FF	00	00	09...=.....
00000030	00	3F	00	46	00	00	00	00	5A	51	01	00	00	00	00	00	.?F...2Q.....
00000040	00	00	00	00	00	00	4C	00	90	11	15	C7	00	00	08	43L.....C
00000050	36	33	38	32	39	34	31	33	32	36	30	36	31	38	FF	FF	63829413260618..
00000060	E2	13	5C	80	90	00	00	64	3E	1D	29	0C	03	48	2A	63	..\....d>.)..H*c
00000070	52	53	0C	00	40	60	AB	26	58	80	80	00	00	64	FF	1E	RS..@`.&X...d..
00000080	5F	85	78	48	2A	6D	00	BF	63	78	21	A4	1A	39	11	08	_(H*m...c{1..9..
00000090	08	00	00	00	01	17	94	10	2E	62	2E	37	17	94	10	2Eb.7....
000000A0	62	2E	37	31	18	40	40	00	00	00	03	1E	0A	7A	7B	08	b.71.0@.....z{.
000000B0	30	BC	1E	0A	72	7B	48	30	BC	0D	10	02	02	00	00	00	0...r{H0.....
000000C0	01	00	59	CE	59	21	31	F1	00	59	CE	59	21	31	F1	06	..Y.Y{1..Y.Y{1..
000000D0	11	02	12	00	00	00	01	1E	4F	00	CB	18	5C	80	1E	4FO...\\O
000000E0	00	CB	18	5C	80	24	11	80	80	00	00	01	1E	02	57	\$......W
000000F0	FD	4C	5D	47	1B	82	57	FD	4C	5D	47	29	10	01	01	00	.L]G...w.L]G)...
00000100	00	63	01	05	99	7F	70	28	62	A3	05	99	7F	70	28	62	.c...p(b...p(b
00000110	A3	33	54	40	40	00	00	64	01	00	13	6C	7B	21	20	AE	.3T@...d...l{!
00000120	00	13	6C	7B	21	20	AE	23	5C	08	08	00	00	64	02	00	..l{!.#}...d..
00000130	4E	62	00	21	20	AE	00	4E	63	00	2C	A4	1A	39	08	AD	Nb!..NC...9..
00000140	54	B7	18	00	46	00	00	AD	54	B7	18	00	46	00	00	AD	T...F...T...F...
00000150	54	B7	18	FF	0B	00	00	00	FF	FF	FF	FF	FF	FF	FF	FF	T.....
00000160	FF	FF	FF	FF	FF	FF	FF	FF	FF	FF	FF	FF	FF	FF	FF	FF
00000170	FF	FF	FF	FF	FF	FF	FF	FF	FF	FF	FF	FF	FF	FF	FF	FF
00000180	FF	FF	FF	FF	FF	FF	FF	FF	FF	FF	FF	FF	FF	FF	FF	FF
00000190	FF	FF	FF	FF	FF	FF	FF	FF	FF	FF	FF	FF	FF	FF	FF	FF
000001A0	FF	FF	FF	FF	FF	FF	FF	FF	FF	FF	FF	FF	FF	FF	FF	FF
000001B0	FF	FF	FF	FF	FF	FF	FF	FF	FF	FF	FF	FF	FF	FF	FF	FF
000001C0	FF	FF	FF	FF	FF	FF	FF	FF	FF	FF	FF	FF	FF	FF	FF	FF
000001D0	FF	FF	FF	FF	FF	FF	FF	FF	FF	FF	FF	FF	FF	FF	FF	FF
000001E0	FF	FF	FF	FF	FF	FF	FF	FF	FF	FF	FF	FF	FF	FF	FF	FF
000001F0	3E	1E	55	CC	00	08	12	86	7C	00	52	B0	52	B0	52	B0	>.U...R.R.R.
00000200																	

Write in eeprom data, as shown in example (red with green border)

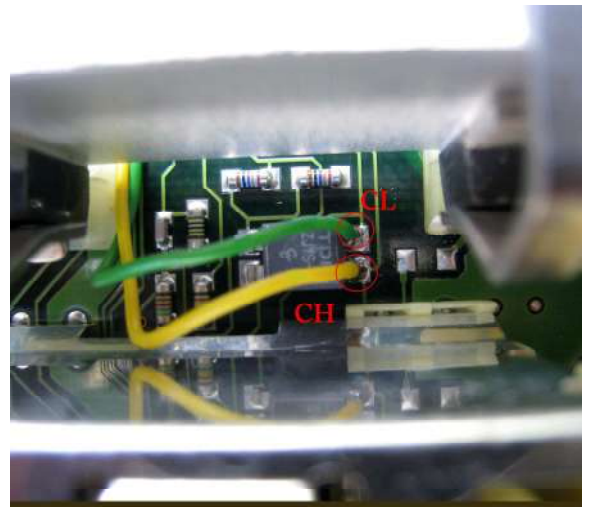
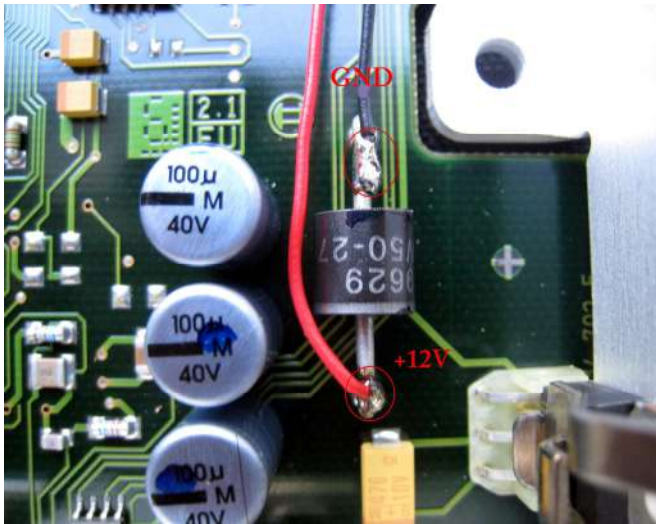
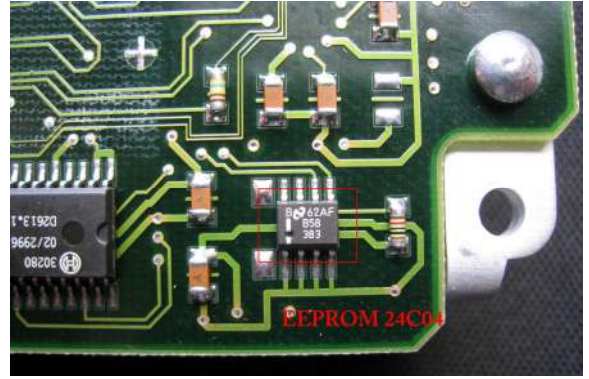
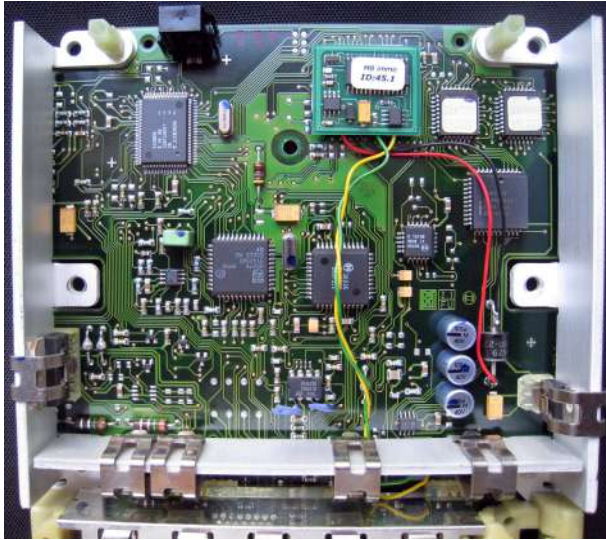
MB Sprinter, 5 plugs, eeprom 95080, system CR2



	0	1	2	3	4	5	6	7	8	9	A	B	C	D	E	F	0	1	2	3	4	5	6	7	8	9	A	B	C	D	E	F			
00000000	91	FF	FF	71	FF	16	16	32	39	32	2E	31	31	FF	FF	2C	...	q...	292	11	...														
00000010	16	16	32	39	32	2E	31	31	FF	FF	FF	FF	FF	FF	FF	FF	...	292	11	...															
00000020	FF	FF	FF	FF	FF	FF	FF	FF	FF	FF	FF	FF	FF	FF	FF	FF	...																		
00000030	FF	FF	FF	FF	FF	FF	00	3C	01	74	FF	AA	FF	FF	FF	03	...																		
00000040	01	5C	20	20	00	01	64	02	00	04	80	00	00	00	2C	BA	...																		
00000050	8F	00	04	50	00	00	00	2C	BA	8F	46	10	01	01	00	00	...																		
00000060	64	01	00	49	4E	20	FD	60	01	BA	8F	00	49	4E	20	FD	...																		
00000070	60	01	BA	8F	FF	FF	FF	FF	FF	FF	FF	FF	FF	FF	FF	FF	...																		
00000080	FF	FF	FF	FF	FF	FF	FF	FF	FF	FF	FF	FF	FF	FF	FF	FF	...																		
00000090	FF	FF	FF	FF	FF	FF	FF	FF	FF	FF	FF	FF	FF	FF	FF	FF	...																		
000000A0	FF	FF	FF	FF	FF	FF	FF	FF	FF	FF	FF	FF	FF	FF	FF	FF	...																		
000000B0	FF	FF	FF	FF	FF	FF	FF	FF	FF	FF	FF	FF	FF	FF	FF	FF	...																		
000000C0	FF	FF	FF	FF	FF	FF	FF	FF	FF	FF	FF	FF	FF	FF	FF	FF	...																		
000000D0	FF	FF	FF	FF	FF	FF	FF	FF	FF	FF	FF	FF	FF	FF	FF	FF	...																		
000000E0	FF	FF	FF	FF	FF	FF	FF	FF	FF	FF	FF	FF	FF	FF	FF	FF	...																		
000000F0	FF	FF	FF	FF	FF	FF	FF	FF	FF	FF	FF	FF	FF	FF	FF	FF	...																		
00000100	FF	FF	FF	FF	FF	FF	FF	FF	FF	FF	FF	FF	FF	FF	FF	FF	...																		
00000110	FF	FF	FF	FF	FF	FF	FF	FF	FF	FF	FF	FF	FF	FF	FF	FF	...																		
00000120	FF	FF	FF	FF	FF	FF	FF	FF	FF	FF	FF	FF	FF	FF	FF	FF	...																		
00000130	FF	FF	FF	FF	FF	FF	FF	FF	FF	FF	FF	FF	FF	FF	FF	FF	...																		
00000140	FF	FF	FF	FF	FF	20	00	00	00	00	00	00	00	00	00	00	...																		
00000150	00	00	00	00	00	00	00	00	00	00	00	00	00	00	00	00	...																		
00000160	FF	FF	FF	FF	FF	FF	FF	FF	FF	FF	FF	FF	FF	FF	FF	FF	...																		
00000170	FF	FF	FF	FF	FF	FF	00	00	DC	FF	10	27	E7	FF	00	00	...																		
00000180	D4	FF	00	00	28	FF	10	27	1B	FF	00	00	20	FF	81	09	...																		
00000190	00	0E	00	03	72	91	00	FF	00	00	00	00	39	30	34	36	...																		
000001A0	31	33	31	52	34	39	31	35	31	38	00	00	00	FF	FF	FF	...																		
000001B0	00	3F	00	57	08	FF	44	FF	2D	00	00	00	A4	38	00	00	...																		
000001C0	FF	FF	FF	FF	FF	FF	FF	FF	FF	FF	FF	FF	FF	FF	FF	01	3F	...																	
000001D0	02	03	00	FF	FF	18	3F	35	47	F7	0C	1D	74	AF	F7	91	...																		
000001E0	47	20	46	11	01	02	01	2C	01	00	00	33	F5	1A	01	EF	...																		
000001F0	C8	14	07	45	B1	B1	82	D3	6C	E0	81	DF	63	F6	17	90	...																		
00000200	6A	19	3C	3C	40	6B	87	23	C6	5F	33	20	58	90	66	77	...																		
00000210	C0	7B	A9	83	0D	A5	AB	04	7B	3B	E2	69	70	C3	B8	34	...																		
00000220	12	FA	A1	86	39	F6	04	6A	7E	B6	1B	49	54	A3	68	63	...																		
00000230	3A	BB	85	09	30	A6	7E	E4	E2	32	10	BF	B1	B1	82	D3	...																		
00000240	6C	E0	81	DF	63	F6	17	90	6A	19	3C	3C	40	6B	87	23	...																		
00000250	C6	5F	33	20	58	90	66	77	C0	7B	A9	83	0D	A5	AB	04	...																		
00000260	7B	3B	E2	69	70	C3	B8	34	12	FA	A1	86	39	F6	04	6A	...																		

Write in eeprom data, as shown in example (red with green border)

**Old sprinter, E210
ECU with one plug, eeprom 24C04**



	0	1	2	3	4	5	6	7	8	9	A	B	C	D	E	F	0123456789ABCDEF	
00000000	00	00	00	00	00	00	00	00	00	00	00	A1	01	40	00@.		
00000010	37	36	33	2E	30	37	AA	AA	37	36	33	2E	30	37	AA	AA	763.07..763.07..	
00000020	55	AA	55	AA	55	AA	55	AA	F7	6F	01	58	FF	FF	00	00	U.U.U.U..o.X...	
00000030	FF	FF	FF	FF	B8	03	04	00	A2	55	45	52	45	11	00	08UBERE..C	
00000040	12	86	7C	00	FF	FF	FF	00	90	37	65	D1	71	14	FF	FF	...1.....7e.q...	
00000050	39	30	33	34	31	33	31	50	36	39	34	34	35	32	FF	FF	9034131p694452..	
00000060	4E	09	5C	01	01	00	00	64	14	1B	59	59	00	48	23	5C	N.\....d..yy.H#\	
00000070	11	01	00	00	64	02	1B	6D	8E	70	08	10	10	40	40	00	...d..m.p...@.	
00000080	00	00	01	00	6E	02	47	01	32	44	40	20	00	00	64	01	...n.G.2D@ ..d.	
00000090	00	0B	79	79	01	FF	FF	FF	FF	FF	FF	FF	FF	FF	FF	FF	..yy.....	
000000A0	FF	FF	FF	FF	FF	FF	FF	FF	FF	FF	FF	FF	FF	FF	FF	FF	
000000B0	FF	FF	FF	FF	FF	FF	FF	FF	FF	FF	FF	FF	FF	FF	FF	FF	
000000C0	FF	FF	FF	FF	FF	FF	FF	FF	FF	FF	FF	FF	FF	FF	FF	FF	
000000D0	FF	FF	FF	FF	FF	FF	FF	FF	FF	FF	FF	FF	FF	FF	FF	FF	
000000E0	FF	FF	FF	FF	FF	40	00	00	00	00	00	00	00	00	00	00	...@.....	
000000F0	00	00	00	00	00	00	00	00	00	00	00	00	00	00	00	FF	FF
00000100	FF	FF	FF	FF	FF	FF	FF	FF	FF	FF	FF	FF	FF	FF	FF	FF	
00000110	FF	FF	FF	FF	FF	FF	FF	FF	FF	FF	FF	FF	FF	FF	FF	FF	
00000120	FF	FF	FF	FF	FF	FF	FF	FF	FF	FF	FF	FF	FF	FF	FF	FF	
00000130	FF	FF	FF	FF	FF	FF	FF	FF	FF	FF	FF	FF	FF	FF	FF	FF	
00000140	FF	FF	FF	FF	FF	FF	FF	FF	FF	FF	FF	FF	FF	FF	FF	FF	
00000150	FF	FF	FF	FF	FF	FF	FF	FF	FF	FF	FF	FF	FF	FF	FF	FF	
00000160	FF	FF	FF	FF	FF	FF	FF	FF	FF	FF	FF	FF	FF	FF	FF	FF	
00000170	FF	FF	FF	FF	FF	FF	FF	FF	FF	FF	FF	FF	FF	FF	FF	FF	
00000180	FF	FF	FF	FF	FF	FF	FF	FF	FF	FF	FF	FF	FF	FF	FF	FF	
00000190	FF	FF	FF	FF	FF	FF	FF	FF	FF	FF	FF	FF	FF	FF	FF	FF	
000001A0	FF	FF	FF	FF	FF	FF	FF	FF	FF	FF	FF	FF	FF	FF	FF	FF	
000001B0	FF	FF	FF	FF	FF	FF	FF	FF	FF	FF	FF	FF	FF	FF	FF	FF	
000001C0	FF	FF	FF	FF	FF	FF	FF	FF	FF	FF	FF	FF	FF	FF	FF	FF	
000001D0	FF	FF	FF	FF	FF	FF	FF	FF	FF	FF	FF	FF	FF	FF	FF	FF	
000001E0	FF	FF	FF	FF	FF	FF	FF	FF	FF	FF	FF	FF	FF	FF	FF	FF	
000001F0	FF	FF	FF	FF	FF	FF	FF	FF	FF	FF	FF	FF	FF	FF	FF	FF	
00000200																		

Write in eeprom data, as shown in example (red with green border)