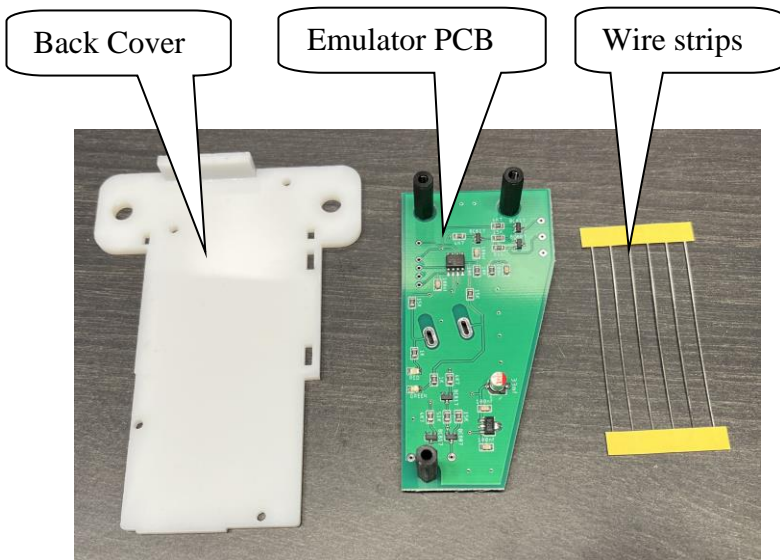


## VW Passat B6 ESL V1.0 emulator installation guide

ESL emulator used to simulate damaged ESL mechanical parts, including electric motor and micro switches. No programming required

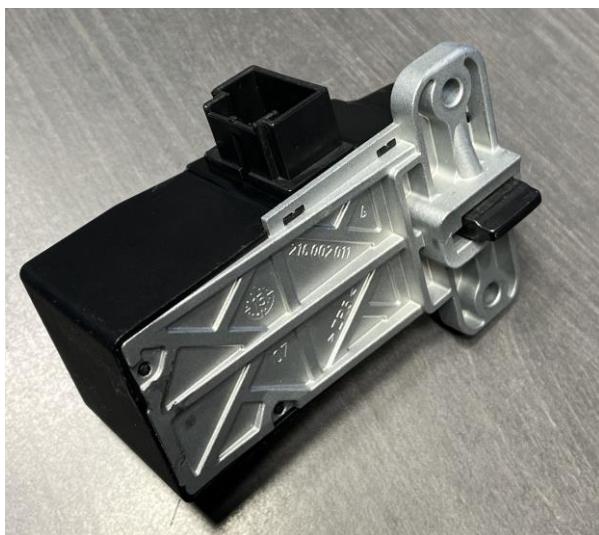
**IMPORTANT:** The electronic parts of the ESL PCB must work properly

The ESL emulator kit includes:

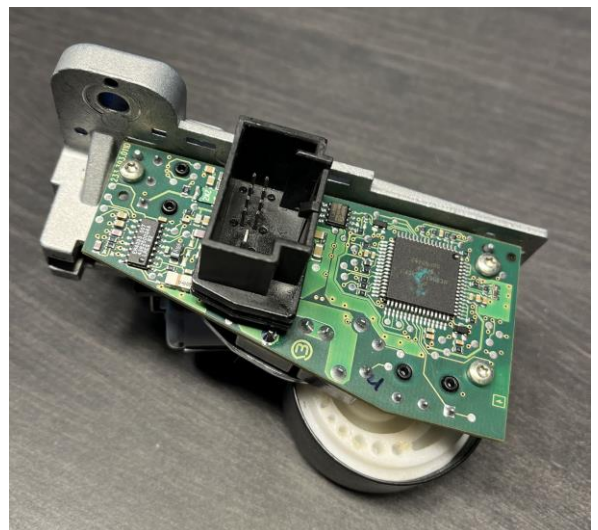


### Installation “Step by Step”

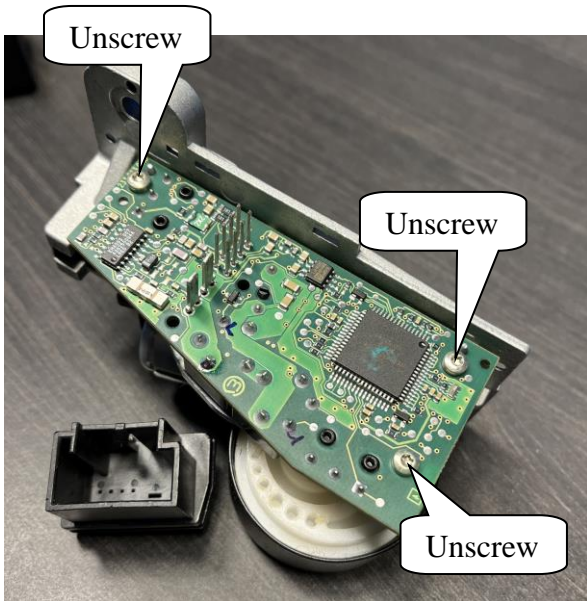
1. Remove ESL from car



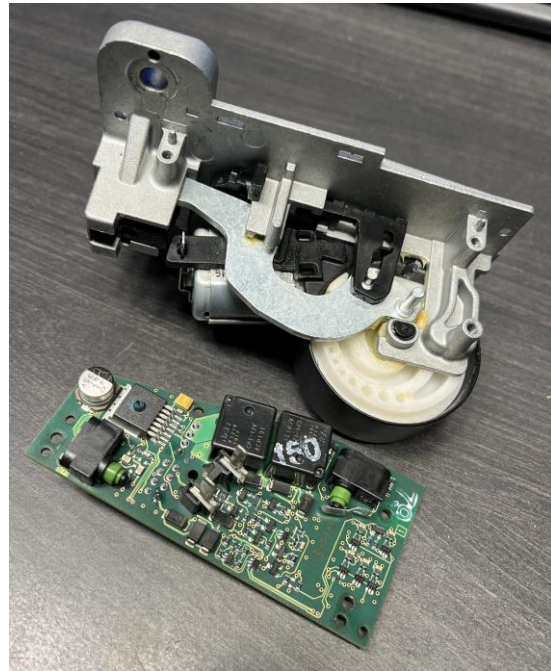
2. Remove plastic cover



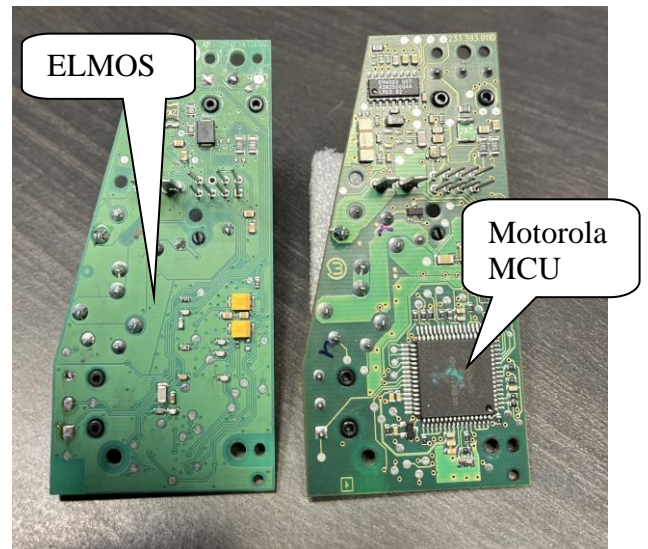
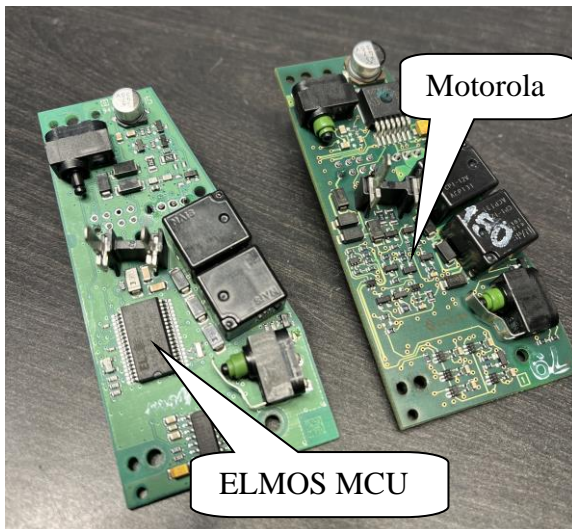
3. Remove plastic connector case and unscrew the screws



4. Remove PCB from mechanical part

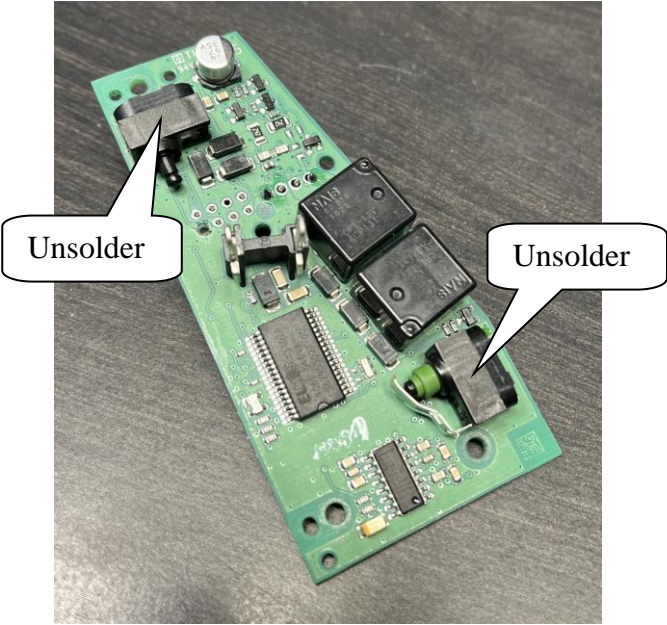


**NOTE:** PCB of ESL can be two types: With ELMOS or with Motorola MCU. Examples in photo below. ESL emulator works with both types of PCB.

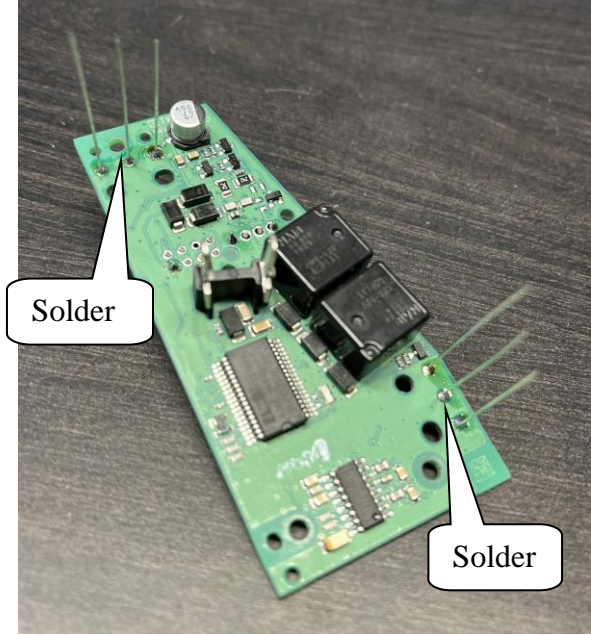




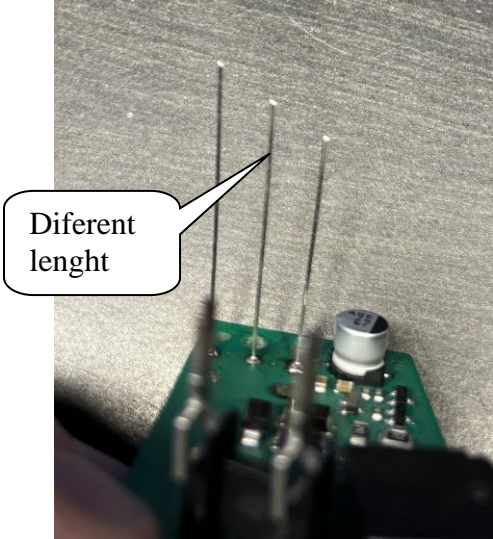
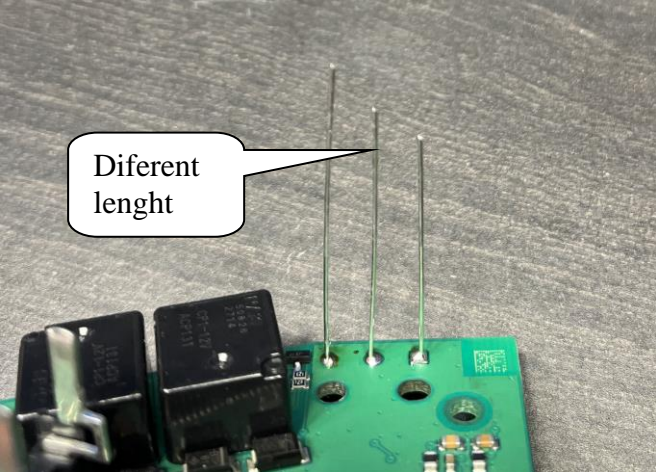
5. Unsolder the micro switches



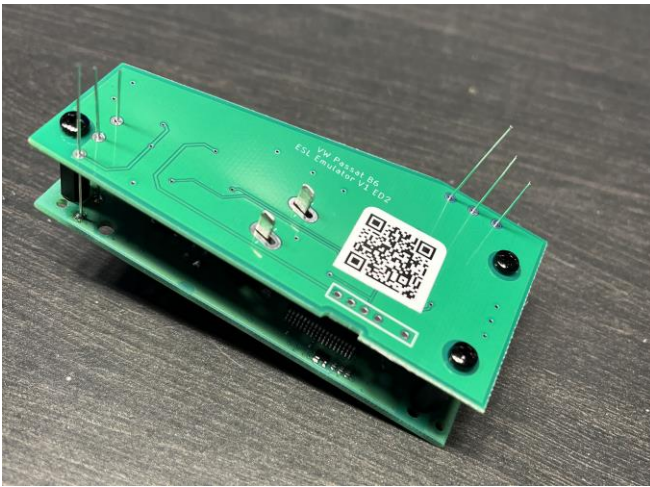
6. Solder wire strips (included) instead of micro switches



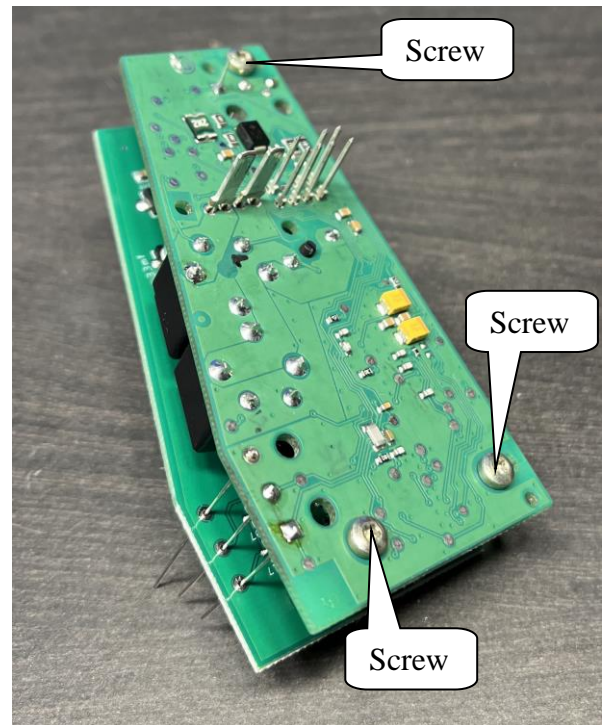
**RECOMMENDATION:** Cut wire strips of different lengths - this will simplify the next step of installing the emulator



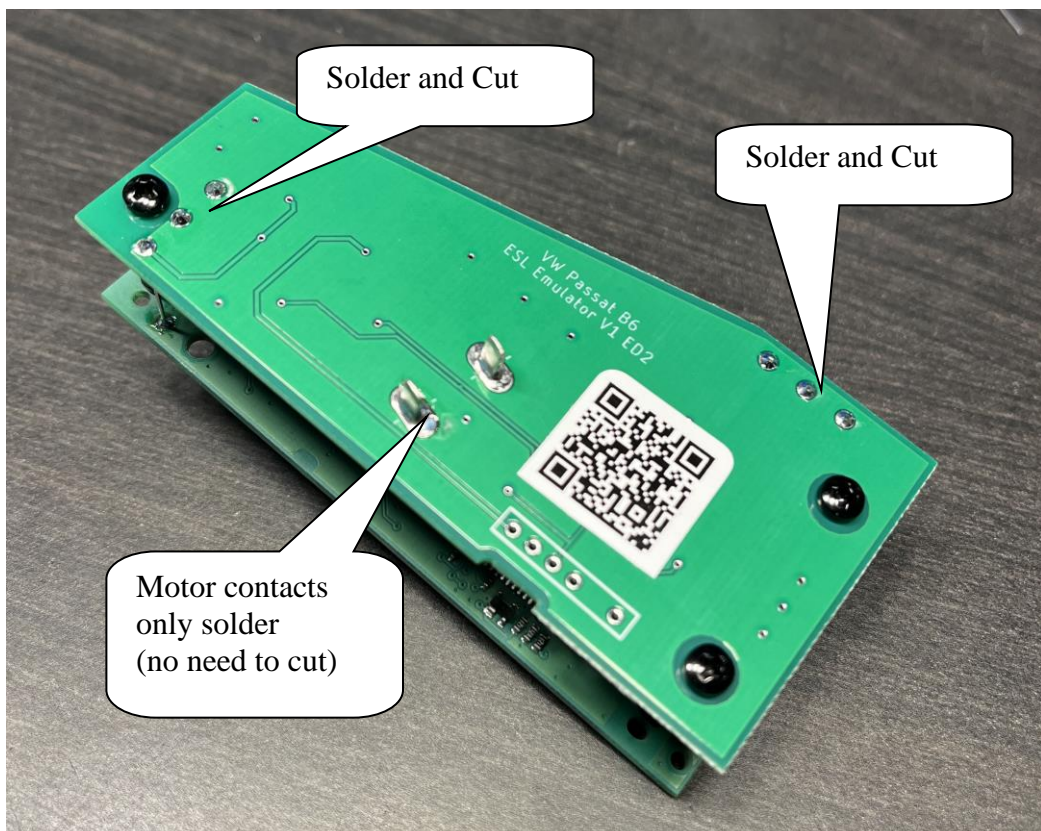
**7. Mount on the ESL PCB, emulator PCB**



**8. Screw the PCB to the Emulator PCB. Use screws from ESL PCB who is unscrewed in step 3**

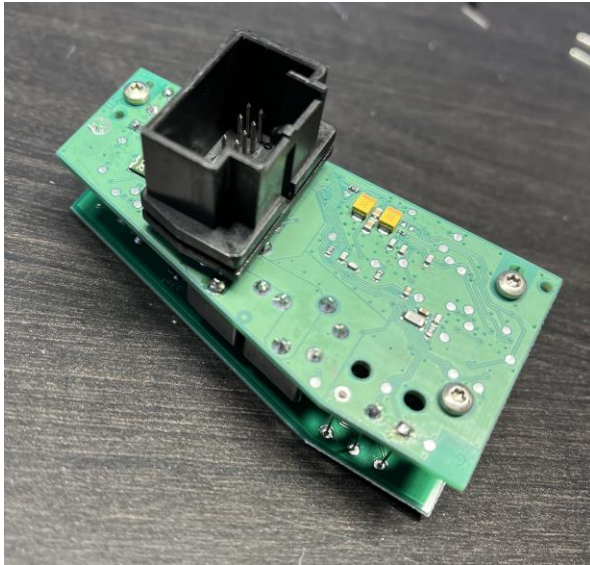


**9. Solder and cut on the emulator PCB wire strips, and solder motor contacts**

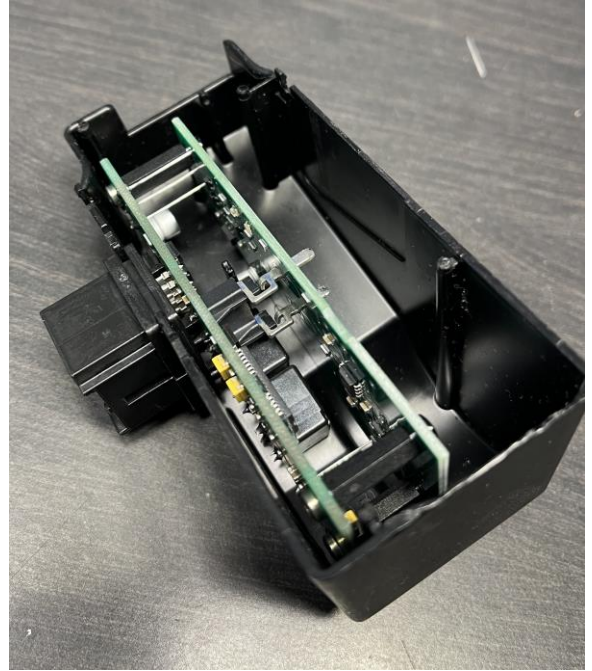




*10. Put the plastic connector in its old place*



*11. Insert construction in the plastic case of ESL*



*12. Put the plastic cover (included) on the ESL case. Plastic cover fix with plastic glue (not included)*



*13. Mount back in the car.*

**No programming required, installation finished**